

# Questions to Ask

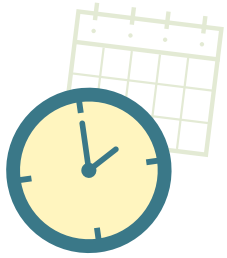
## When Choosing an ECE Program for Your Child

### Licensing and Credentialing

- Is the early childhood program/setting licensed by the state or local government?
- Is the early childhood program/setting accredited by the National Association for the Education of Young Children or the National Association of Family Child Care?
- Are the educators credentialed by the Council for Professional Recognition with a Child Development Associate (CDA) Credential™ for infant-toddlers, preschool or family childcare?
- Do educators possess an equivalent credential that addresses comparable competencies (such as an associate's or bachelor's degree)?
- What training do staff members have in infant-toddler development, and/or preschool?



### Parental Engagement



- Are parents free to visit at any time during the day?
- Do parents receive daily written reports about the children's day (and formal progress reports at least twice a year)?
- How can parents get involved in the program?

### Language, Accessibility and Diversity

- Do the educators speak to the children, including babies/infants? Do they sing and read to the children?
- Do the educators speak your home language?
- Does the program philosophy embrace diversity and dual language learning?
- Are the educators able to accommodate the special needs of children?
- Do the educators respect the language, culture, and values of families in the program?
- Does the environment accommodate the special needs of children?



COUNCIL  
for  
PROFESSIONAL  
RECOGNITION

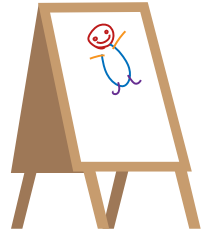


## Class Size

- Is there a primary teacher for my child?
- Are the ratios and group size appropriate for my child's age?

## Schedules

- Is each baby allowed to eat and sleep according to their own rhythms, and not based on a schedule imposed by the teacher?
- For toddlers/preschoolers, is a daily schedule posted, using pictures and visuals, so that children can anticipate what will happen next?
- Are children permitted to function on individual schedules? What does this look like?



## Pedagogy and Practice

- Do teachers answer children's questions patiently? Do the teachers ask children questions?
- Are toys and materials well organized so that children can choose what interests them?
- How do the educators feel about discipline/guidance? Weaning? Toilet learning? Feeding? Do the educators' beliefs match your own?
- Do the educators handle conflict without losing patience, shaming a child, or frequently displaying anger?
- Do the educators seem to enjoy children?
- Do the educators get along and seem to be happy with each other?
- What is the average length of time that educators work for this child care program?

## Environment and Safety

- Would your child feel comfortable visiting this program? Would you feel comfortable leaving your child at this program?
- What safety measures do staff members take to ensure child safety indoors, outdoors, and in case of an emergency?
- Is the environment sanitary and safe?
- Is the setting appealing, with comfortable lighting and an acceptable noise level?



## If your child has special needs and/or a disability (Special Accommodation)

- Are the staff members enthusiastic about accommodating your child?
- Do the staff members understand the medical and therapeutic procedures and assistive technology to support your child's needs?
- Are the staff members trained and supported to accommodate children with special needs?
- Is the setting accessible to your child?
- Do any books/toys feature children with special needs?
- Are the staff members willing to help your child develop the skills that match what your family believes are important?